

# CAPABILITY STATEMENT

VERTECH NZ

## THE PURPOSE

This document is composed to assist our clients and the supply chain to understand our group operating structure along with a high-level understanding of the benefits, services and specialist packages associated with our access and inspection capabilities.





# WHO WE ARE

Vertech is part of a wider group of companies that together deliver a comprehensive range of asset integrity, inspection, maintenance, and specialist access services across diverse industries and sectors throughout Australia, New Zealand, the USA, and beyond.

Vertech Australia, NZ, and USA provide a full suite of inspection, Non-Destructive Testing (NDT), integrity, and maintenance solutions supported by specialist access systems. Abseil Access, trading as Vertech NZ, are specialists in bridge engineering, geotechnical slope stabilisation, rockfall protection, and rope access solutions.

Our group includes:

**Geo Oceans** – Leaders in Mini-ROV IRM and subsea inspection, with expertise in AUV and ASV deployment.

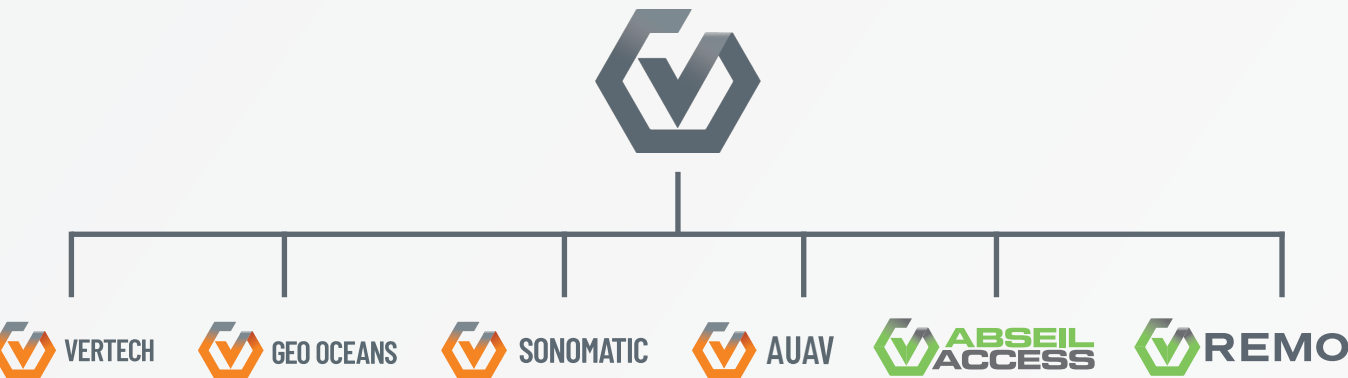
**Sonomatic** – A global leader in specialised NDT and integrity inspection solutions.

**AUAV** – Experts in UAV, drone-based inspections, and 3D modelling.

**Remo Technical Services** – A leading supplier of turbine installation, maintenance, and inspection services.

Together, we deliver tailored service packages designed to meet the specific needs of each client and asset. By collaborating across our group of companies, we drive innovation, improve safety, and ensure consistent delivery of high standards across the energy, resources, mining, and infrastructure sectors.

At the heart of our approach lies a “people first” philosophy, where we prioritise the well-being and development of our team members. Guided by Servant Leadership, we foster collaboration, empower frontline staff, and encourage a sense of community and ownership across the organisation. This inverted structure reflects our belief that leadership’s primary role is to serve—enhancing our ability to respond to clients and maximise delivery.



## OUR 4 CORE VALUES



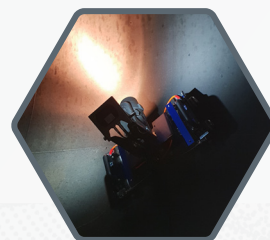
PEOPLE



SAFETY



QUALITY



INNOVATION

# IANZ ACCREDITATION

In August 2025 Vertech New Zealand was proud to be formally accredited by International Accreditation New Zealand (IANZ) under ISO/IEC 17020:2012 as a Type C Inspection Body. This accreditation is a significant milestone, affirming our technical competence, impartiality, and operational integrity in delivering Non-Destructive Testing (NDT) services. It covers our full suite of mechanical inspections, including Ultrasonic Testing (UT), Visual Testing (VT), Magnetic Particle Testing (MT), and Eddy Current Testing (ET)—all available via rope access where required.

Notably, we are one of the few providers in New Zealand offering IANZ-accredited NDT services via rope access, setting a new industry benchmark. This combination ensures our clients receive the highest standard of inspection services in even the most challenging environments—safely, efficiently, and with full regulatory confidence. With competitors yet to achieve this level of integrated accreditation, our clients can be assured of both unmatched capability and compliance.

# NEW TECHNOLOGY

Collaboratively engineered by our expert RVI team and leading external robotic specialists, the VNZ Custom Inspection Crawler is purpose-built to perform in the most challenging and confined environments.

This unique and advanced tool sets a new benchmark in remote visual inspection, delivering exceptional adaptability and precision. Its modular design and interchangeable wheel configurations enable it to navigate seamlessly through underfloor voids, pipelines, silos, boiler internals, and more—all while capturing high-definition imagery throughout each inspection.

From assessing refractory integrity to locating electrical faults with infrared technology, the crawler excels where human access is restricted or unsafe.

With its compact footprint, flexible design, and task-specific configurations, it is an indispensable asset for complex inspections that demand agility, safety, and consistently reliable results.



# VERTECH NZ

Established in 2015 as a branch of the renowned Vertech Group based in Perth, Australia, Vertech NZ has rapidly built a reputation for delivering high-quality, reliable, and safe industrial services across various sectors. Specialising in rope access, remote visual inspection (RVI), and non-destructive Testing (NDT), Vertech NZ combines cutting-edge technology, expert knowledge, and a commitment to operational excellence.

Initially focused on servicing FPSO Raroa units, Vertech NZ became a trusted partner for critical maintenance and inspection services. Over the years, the company has expanded its expertise, now serving a diverse client base across the energy, infrastructure, dairy and food production and manufacturing industries. Vertech NZ’s RVI division has set the standard for non-invasive equipment inspection, utilising digital inspection systems to safely assess assets without the need for confined space entry (CSE) or costly scaffold.

Vertech New Zealand is ISO and IANZ accredited with certified personnel, ensuring the delivery of reliable, accurate results and optimal safety. The 2024 integration with Abseil Access enhances its rope access and asset integrity capabilities, while group partnerships with Sonomatic, Geo Oceans, and AUAV bring advanced inspection technologies, engineering expertise, and aerial drone capabilities. This collaborative approach enables Vertech NZ to offer comprehensive, tailored solutions that reduce operational costs, improve asset performance, and uphold the highest industry standards.

With a strong focus on innovation, client satisfaction, and safety, Vertech NZ is committed to delivering exceptional inspection, testing, and maintenance services that help clients optimize and maintain critical assets.

# ABSEIL ACCESS NZ LTD (AA)

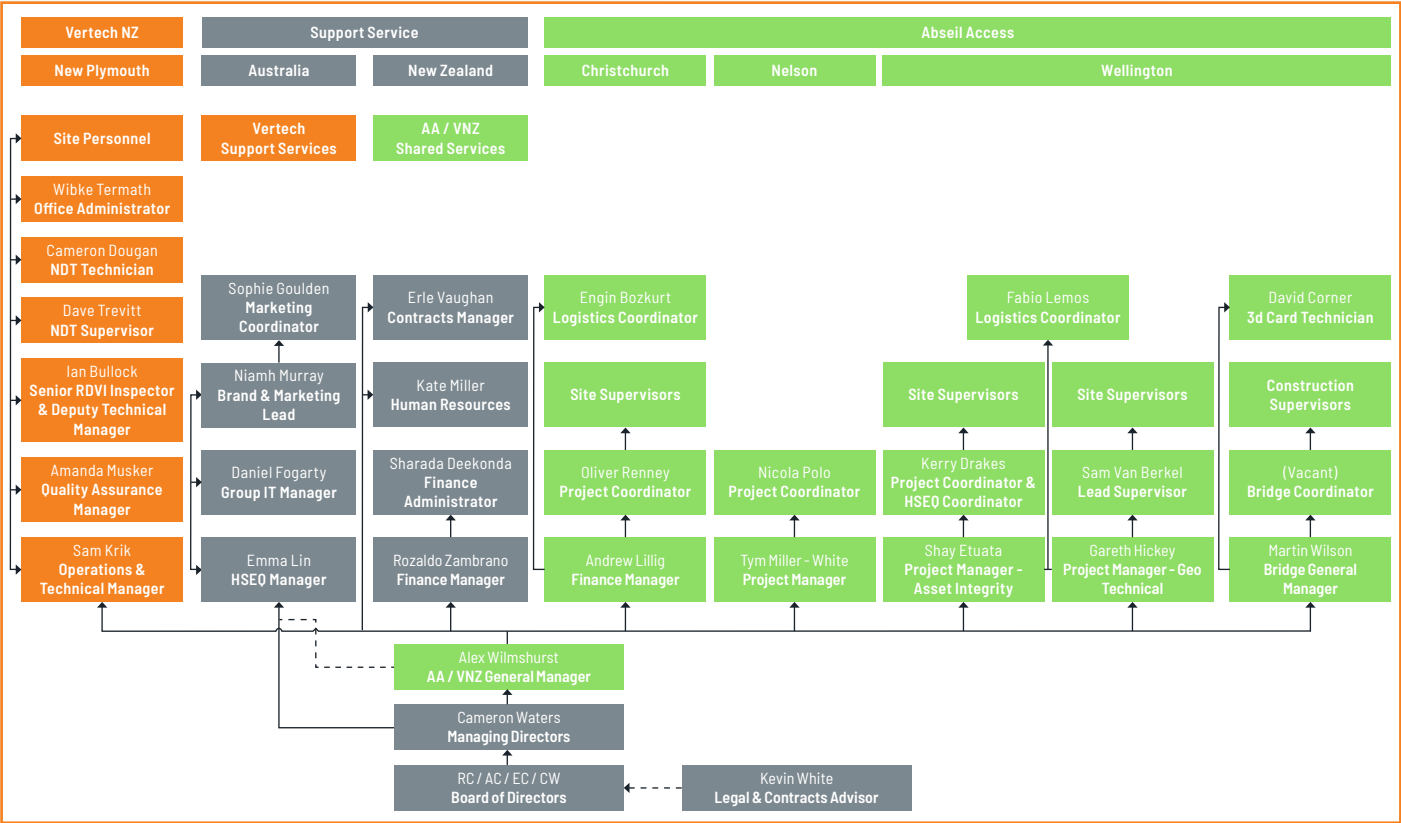
Abseil Access has supplied industry-leading services including bridge design, bridge engineering & construction, Geotechnical slope stabilisation and rockfall protection, conservation, and rope access services across a multitude of sectors since 1992.

The nature of core business is engineering, bridge construction, geotechnical and rope access services across a wide range of sectors. Abseil Access is committed to a safe and healthy working environment and consistently strives to improve not just safety performance but also for partners and peers. They work closely with employees, partners, and clients to reinforce a positive culture, values, HSE and environmental impact.

Our offices are located in Wellington, Christchurch, Nelson, and New Plymouth to support operations in even the most remote parts of New Zealand.

# VNZ AND AA STRUCTURE

## VERTECH - NEW ZEALAND BUSINESS UNIT: ABSEIL ACCESS NZ. LTD.



## PARTNERSHIP AND IMPARTIALITY

Vertech NZ operates as a Type-C inspection body under ISO 17020 and IANZ standards, ensuring impartiality and independence despite its integration with Abseil Access Ltd. Both entities share a New Zealand Business Number and integrated administrative functions, with Vertech NZ maintaining operational autonomy. An operations manager oversees Vertech NZ, while senior leadership from the Vertech Group provides strategic oversight.

To maintain independence and impartiality, Vertech NZ adheres to the robust Vertech Group Quality Management System (QMS) compliant with ISO 17020 and IANZ requirements. While Vertech NZ and Abseil Access collaborate on projects—particularly in rope access— a clear independence and impartiality policy ensures reporting lines and all inspection decisions, including scheduling and technical determinations, remain independent. This structure preserves the integrity of Vertech’s inspection services.

Both companies operate under a shared Integrated Management System (IMS), for quality, safety and environmental management. Strict guidelines are followed for projects involving both entities, with full disclosure made to clients and regulators to mitigate conflicts of interest.

Through senior management oversight and continuous improvement initiatives, Vertech NZ ensures impartiality and independence, safeguarding the trust of clients and regulators, delivering reliable and objective inspection services.



# VNZ SERVICES

## ADVANCED IN-FIELD RVI AND NDT

Vertech NZ's In-Field Inspection execution team works alongside statutory and class societies to assess and record the condition of an asset. We offer non-destructive testing (NDT) services to companies in many industries that possess assets or infrastructure. Our comprehensive range of conventional and advanced NDT services ensures our clients receive first-class deliverables.

Vertech has proven experience in NDT inspection planning, advising clients on NDT services, and providing recommendations and solutions to comply with international and Australian standards.

Vertech Group is certified to ISO 17025 as an NDT inspection body by the National Association of Testing Authorities (NATA), accreditation number 18112 and Vertech New Zealand holds International Accreditation New Zealand (IANZ) of 2025 for MT, UT, VT and ET.

## CERTIFIED WELDING INSPECTIONS (CBIP/CSWIP)

Our certified welding inspectors (CBIP-CWI/CSWIP 3.1) are qualified to perform detailed inspections of welds, ensuring compliance with industry standards and codes. We can also develop welding procedures, qualify welding operators and provide verification throughout the fabrication process, and produce final documentation to assist with gaining code compliance.

## FOREIGN OBJECT SEARCH AND RETRIEVAL (FOSAR)

We specialise in the retrieval of foreign debris that could compromise the functionality and safety of machinery and equipment, using a combination of off-the-shelf and custom-built tooling systems. These systems allow us to efficiently remove contaminants found during inspections, without the need for costly confined space entry (CSE), ensuring the ongoing integrity of our clients' plants and processes. Our expert team employs advanced techniques to identify and effectively eliminate foreign matter, safeguarding the performance and safety of critical assets.

## ROPE ACCESS INSPECTIONS

Utilising rope access techniques, we provide efficient and cost-effective inspection services for any of our NDT disciplines in challenging and elevated locations. This method allows for safe and precise inspections without the need for extensive scaffolding.

## REPORTING AND QUALITY ASSURANCE

What sets Vertech NZ's team apart is our ability to engage effectively with all stakeholder groups, from onsite personnel to upper management. We ensure clear communication and interpretation of data, results, and information throughout the project. By adhering to the project's scope and ITPs, maintaining rigorous quality assurance, and providing detailed, timely reporting, we keep all stakeholders informed and aligned. Our approach includes comprehensive documentation, supporting efficient project planning, execution, and a smooth closeout, ensuring transparency and confidence at every stage.

## MECHANICAL INSPECTION AND SERVICING

Most of Vertech NZ's inspection team have previously served their time in a mechanical or fabrication trade, prior to entering the inspection industry. This has enabled the team to be able to be called upon, by clients, to assist with mechanical services, including gas turbines, compressor shaft alignment and setup / change out.





# NDT SERVICES

## REMOTE VISUAL INSPECTION /VISUAL TESTING (RVI/VT - IANZ )

The Vertech NZ's Advanced-RDVI team brings over 40 years of experience across industries such as oil, gas, petrochemical, pharmaceutical, dairy, and power generation worldwide. Our remote visual inspection (RVI) services, utilising advanced technologies like custom made crawler cameras with FLIR systems, articulated borescopes, and pan/tilt zoom cameras, enable thorough inspections in confined or hard-to reach areas. This ensures high-quality, repeatable results with minimal disruption to operations and reduces the need for confined space entries. Vertech NZ's experienced technicians provide reliable, efficient inspections with the integrity and accuracy necessary for future comparative analysis, giving clients the confidence that their inspection needs are met with the right expertise, systems, and support.

## ULTRASONIC TESTING (UT AND UT2 - IANZ)

We offer ultrasonic testing (UT) to detect internal flaws and measure material thickness, crucial for maintaining the integrity of critical components of pressure equipment and structures.

## PENETRANT TESTING (PT)

Our penetrant testing (PT) services are designed to identify surface-breaking defects, particularly suitable stainless, and other non-ferrous alloys. Using dye penetrant methods, we ensure accurate detection of cracks and other surface discontinuities.

DPI is a simple, low-cost method returning valuable information to clients in a timely manner.

## EDDY CURRENT TESTING (ET - IANZ)

Eddy current testing (ECT) allows for the detection of surface and near-surface defects. This method is highly effective for inspecting conductive materials and is particularly useful for detecting corrosion and fatigue damage. It can also be completed, without the need to remove surface coatings, eliminating the requirement to reinstate coatings.

## ROPE ACCESS

Rope access offers an efficient, cost-effective solution for inspecting and maintaining structures in challenging environments. This specialised method allows skilled technicians to safely access difficult-to-reach areas using ropes and equipment, eliminating the need for scaffolding. Compared to traditional approaches, rope access increases efficiency, reduces downtime, enhances safety, and minimises environmental impact. Widely adopted across industries like construction, oil and gas, and maintenance, it provides a flexible and reliable solution for high-altitude work.

## MAGNETIC PARTICLE INSPECTION (MT - IANZ)

Magnetic particle inspection services utilize magnetic fields and particles to detect surface and near-surface discontinuities in ferromagnetic materials, particularly useful for picking up cracks, laminations, or other flaws.





# CASE STUDIES

## VNZ IN ACTION



### GULL PETROL STATION - TANK INSPECTION

**Overview:**  
Vertech NZ successfully conducted a remote visual inspection of a 40,000L single-skin fiberglass petrol storage tank at an operating Gull Petrol Station. Using advanced camera technology, VNZ ensured a safe, efficient, and cost-effective assessment without requiring tank modifications or confined space entry (CSE).

**Challenge:**  
The key challenge was performing a comprehensive inspection while adhering to strict health and safety protocols, mitigating risks in a hazardous environment, and minimizing disruption to a functioning petrol station.

**Solution:**  
Despite restricted access, Vertech NZ deployed its specialised, custom-designed camera heads, video scopes, and tailored tooling. This enabled a thorough inspection without the need for tank alterations or high-risk confined space entry, significantly improving safety and reducing operational costs.

**Results:**  
By leveraging RVI technology, VNZ completed the inspection on schedule, delivering detailed findings to Gull NZ Ltd. This approach enhanced safety, efficiency, and minimized operational downtime and costs.



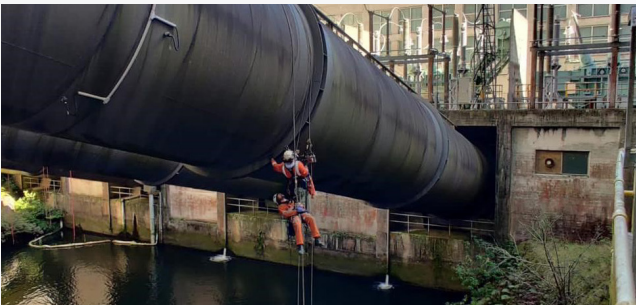
### BALLACE- 8 YEARLY SHUTDOWN

**Overview:**  
During the 2024 8-year shutdown at Ballance Kapuni, Vertech New Zealand provided eight skilled RVI technicians to carry out remote visual inspections. Using advanced technology and adhering to high safety and quality standards, Vertech ensured a smooth and efficient shutdown process.

**Challenge:**  
The challenge was to complete comprehensive RVI inspections within a busy, operational facility while maintaining strict safety compliance. Vertech had to manage large volumes of data and reporting in a tight time frame, ensuring that all findings were accurately documented and easily accessible.

**Solution:**  
Vertech NZ's team conducted the RVI inspections using cutting-edge imaging technology, producing high-resolution footage and detailed reports. This enabled precise, timely decision-making by the client. All inspection data was meticulously recorded, in full compliance with ISO 9001 standards, ensuring transparency and traceability for all stakeholders.

**Results:**  
Vertech completed thorough inspections that enhanced the plant's readiness and safety. The ability to manage large volumes of data, maintain clear communication, and deliver timely, high-quality reports reinforced Vertech's reputation as a trusted partner in industrial inspections and maintenance.



### MERCURY ENERGY - MARAETAI STATION

**Overview:**  
Vertech NZ was tasked with conducting non-destructive testing (NDT) on the penstocks at Mercury Energy's Maraetai Power Station, a key hydropower facility on the North Island. The inspection, using magnetic particle inspection (MPI) and eddy current testing (ECT), aimed to detect surface and subsurface defects. Due to the penstocks' challenging location over water and the high cost of scaffolding, Vertech NZ was chosen for its expertise in both NDT and rope access.

**Challenge:**  
The penstocks' location over water and at height made traditional access methods like scaffolding or watercraft expensive and impractical. Vertech NZ needed to deliver a safe, efficient, and cost-effective solution to perform thorough inspections without disrupting power station operations.

**Solution:**  
Vertech NZ employed rope access to safely reach and inspect the penstocks. Using MPI and ECT, the team carried out detailed inspections for defects, avoiding the need for scaffolding or watercraft. The approach ensured compliance with strict safety and regulatory requirements while maximising efficiency in challenging conditions.

**Results:**  
Rope access reduced both time and costs compared to traditional methods. The inspections identified potential issues early, providing Mercury Energy with the data needed to address defects proactively. Vertech NZ's solution ensured safety, regulatory compliance, and reliable, cost-effective maintenance of critical infrastructure.



### FONTERRA WHAREROA WINTER SHUT

**Overview:**  
For over 20 years, Vertech New Zealand and Abseil Access have partnered with Fonterra during the annual winter shutdown at the Whareroa site, providing rope access inspections and repairs. This longstanding relationship showcases Vertech's ability to deliver safe, efficient, and high-quality services in the dairy and food manufacturing sectors.

**Challenge:**  
The winter shutdown required precise coordination within a limited timeframe to inspect and maintain food-grade silos, perform food-grade welding, and uphold strict hygiene standards. Much of the work involved confined and elevated spaces, demanding the use of specialist booms and rope access techniques, all while maintaining strict safety and food hygiene protocols.

**Solution:**  
Vertech's team utilised rope access and specialist booms for detailed silo inspections and food-grade welding on critical equipment, ensuring compliance with hygiene standards. They worked across the red line, maintaining stringent hygiene controls, while delivering rapid, accurate reports to enable quick decision-making and minimise downtime.

**Results:**  
Vertech completed the shutdown with minimal disruption to Fonterra's operations, ensuring the plant's readiness and compliance with all safety and hygiene standards. The efficient use of rope access and food-grade welding techniques reinforced Vertech's position as a trusted partner in the food manufacturing sector.

# KEY CONTACTS

## VERTECH NZ - NEW PLYMOUTH

**Sam Kirk**

Operations Manager

T: +64 27 251 9986

E: Sam.Kirk@vertechgroup.co.nz

**Wibke Termath**

Office Administrator

E: Wibke.Termath@vertechgroup.co.nz

**Amanda Musker**

Quality Assurance Manager

E: Min.Musker@vertechgroup.co.nz

## ABSEIL ACCESS - WELLINGTON

**Alex Wilmshurst**

General Manager

T: +64 27 488 2849

E: Alex.Wilmshurst@abseilaccess.co.nz

**Rozaldo Zambrano**

Finance Manager

T: +64 4 801 5336

E: Rozaldo.Zambrano@abseilaccess.co.nz

