

# CAPABILITY STATEMENT

## VERTECH GROUP OVERVIEW

### THE PURPOSE

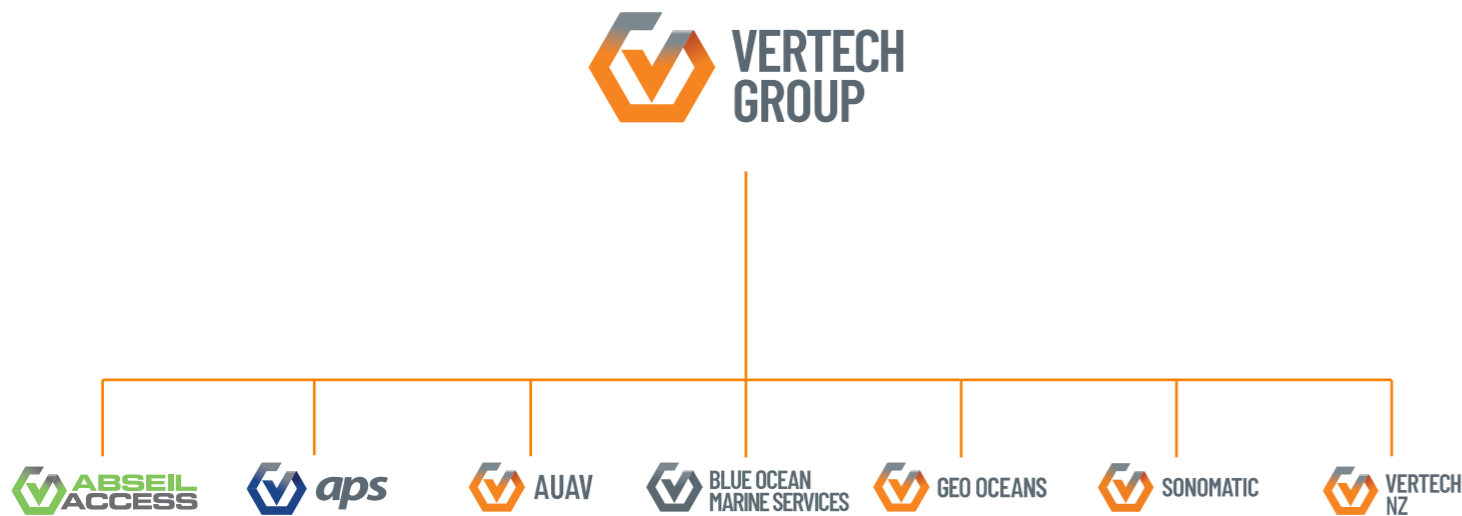
This document is composed to assist our clients and the supply chain in understanding our group operating structure along with a high-level understanding of the benefits, services and specialist packages associated with our capabilities.



# COMBINED SERVICES

Vertech Australia, NZ, and USA deliver a comprehensive array of Inspection, Non-Destructive Testing (NDT) and Maintenance packages all underpinned by Innovative Specialist Access Systems.

Our group is made up of complementary and specialist service providers assisting us to innovate in project delivery across multiple market verticals. They include; **Geo Oceans** an industry leader in Mini-ROV IRM and Subsea Inspection services, **Sonomatic** who are recognised as a global leader in Specialised NDT, **AUAV** a specialist Drone and Data Analytics company, **APS Industrial Services** who deliver Construction, Access and Engineering Services, **Blue Ocean Marine Services** experts in Offshore Surveys and AUVs as well as **Abseil Access** in New Zealand who are a Specialist Infrastructure, Engineering and Geotechnical providers.



**INSPECTION & INTEGRITY**

**CIVIL & RENEWABLE**

**AUTONOMOUS TECHNOLOGY**

**INFRASTRUCTURE & ENGINEERING**

## GEO OCEANS

Geo Oceans is an award winning subsea services provider delivering innovative and disruptive ROV inspection solutions to a global client base. We specialize in developing and deploying small ROV systems and subsea robotics directly from assets or vessels of opportunity to provide clients with reliable, safe, low carbon and low cost solutions for managing subsea asset integrity.

## SONOMATIC

Sonomatic specialises in NDT inspections, integrating engineering capabilities to provide custom solutions using in-house equipment, software, and robotics. Our leadership in ROV/Diver-deployed subsea and NII technologies enables precise, proactive inspection and engineering solutions for safely managing mature and new assets.

## AUAV

AUAV is a drone service provider established in 2013. We offer topographical surveys, LiDAR, inspection, 3D modelling, and bespoke projects. Our team are full-time employees, ensuring quality control. Our proprietary inSite data solution provides consulting, capture, and hosting. We're a top 20 drone service provider globally, certified by the Australian Civil Aviation Safety Authority and insured.

## BLUE OCEAN MARINE SERVICES

BOMS is a joint venture between Blue Ocean Marine Tech Systems and Vertech Group, providing offshore survey solutions using autonomous platforms and sensors. They prioritise agility and innovation to quickly meet clients' technology needs and project requirements.

## IN-SERVICE INSPECTION

Vertech offers specialised in-service inspection services for various industries, ensuring asset integrity and safety. We minimise risks and costs by adhering to codes and standards. Our NATA-certified team is skilled in Australian/New Zealand and American standards, including ISO 17025 and 17020.

### INTEGRITY ENGINEERING SERVICES

Vertech offers customised engineering solutions to help clients manage their assets efficiently, ensuring optimal lifecycle cost, quality, and profitability. Our asset integrity management services, including risk-based inspection, engineering assessments, technical reporting, and document review, are tailored to different asset types.

### MANNED INSPECTION SERVICES

Vertech offers intrusive pressure vessel equipment inspections for plant operators and assets in Australia and New Zealand. Our inspectors are certified in in-service inspection, NDT, CSE, and IRATA rope access. We offer a full range of services, including intrusive or external inspections, confined space vessel inspection, CSE planning and management, rope access, confined space rescue, NATA-compliant reports, and RBI in-service inspections.

### UNMANNED INSPECTION SERVICES

Vertech Group invests in advanced robotics to reduce and eliminate manned inspections. Geo Oceans, its subsidiary, is a pioneering force in the subsea inspection and marine sectors holding class accreditation for Remote Inspection Techniques (RITS) and ROV UWILD, In-Water Survey and Ballast Tanks inspection with most class societies globally. Their patented i-COTTM robotic cargo oil tank inspection system developed in partnership with Sonomatic enables entirely remote inspection of in-service cargo oil tanks on FPSOs and has potential to revolutionize the way cargo oil tanks are inspected on FPSOs globally. At a group level we offer subsea corrosion mapping, mechanical NDT, mini ROV inspection, testing, UAV inspections, robotic crawlers and cameras, cathodic protection inspection, and HP cleaning and maintenance.



## NDT SERVICES

At Vertech, we offer non-destructive testing (NDT) services to companies with assets or infrastructure across many industries. Our industry leading experience with a comprehensive range of conventional and advanced NDT services ensures our clients receive first-class deliverables. Vertech has proven experience in NDT inspection planning, advising clients on NDT services, and providing recommendations and solutions to comply with international and Australian standards.

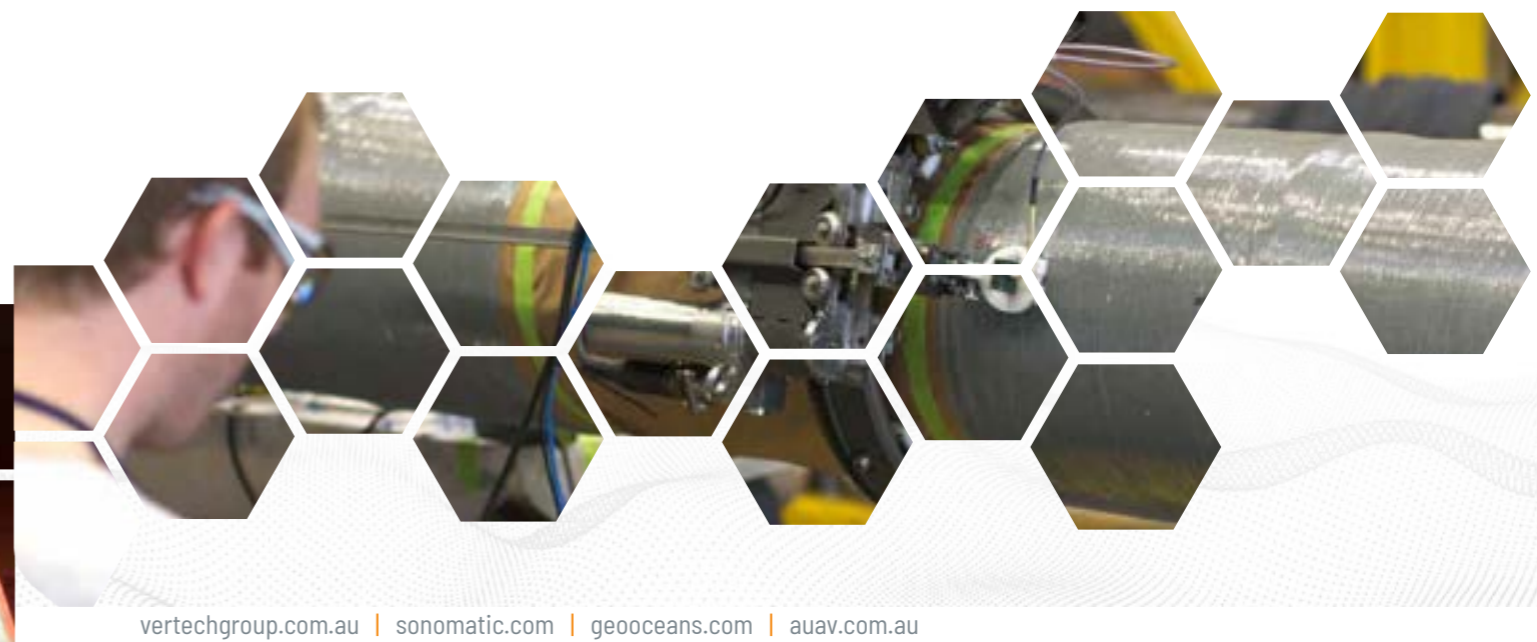
### CONVENTIONAL NDT SERVICES

Ensuring safety, reliability, and compliance with environmental regulations is the responsibility of companies across different sectors. Vertech, with its proven track record in the Asia Pacific region, offers a wide range of conventional Non-Destructive Testing (NDT) methods. Vertech provides solutions to maintain international and Australian standards, from planning campaigns to advising clients on NDT techniques.

### SPECIALISED NDT SERVICES

Sonomatic, a Vertech Group sister company, is a leading provider of specialised NDT inspection services with over 40 years of experience. They design, develop, and build their own inspection systems and scanners that can be modified over time to meet specific requirements for inspection performance, deployment and in-field reliability. Sonomatic reside as the global leader for ROV-deployed subsea inspection and non-intrusive inspection technologies due to their in-house instrumentation design and manufacture capabilities, software development, and customisation of scanner and drive control systems. Sonomatic's active research and development program focuses solely on the Non-Intrusive Inspection (NII) process, and they regularly update their inspection techniques, deployment tools, and data analysis software to provide the most accurate data possible.

Sonomatic offer a wide range of NDT methods, including Automated Corrosion Mapping, Time of Flight Diffraction, Phased Array Ultrasonic Testing, and more, applied in various asset and infrastructure inspections, including non-intrusive inspection, critical welding inspection, corrosion growth assessment and offshore process and structural inspection.



## SPECIALISED & ROPE ACCESS SOLUTIONS



### IRATA ROPE ACCESS

We offer safe and efficient IRATA rope access services across multiple sectors for inspection, testing, maintenance, construction, and decommissioning. We are one of the largest providers of rope access technicians and inspectors in Australia and New Zealand, and have proudly held IRATA operational and training member company accreditation for over 15 years.



### TELESCOPIC TRUSS

Vertech can provide an aluminium telescopic, modular truss boom to achieve full coverage of structures' internal circumference. This innovative, lightweight system is fully adjustable and suspended from a single mid-point. Our rope access personnel work together within spaces and rotate the truss boom to achieve 100% coverage of each elevation of the asset. Our innovative solution to accessing these internal surfaces has succeeded in several sectors.



### CUSTOM ACCESS PLATFORMS

Vertech provides custom work platforms. This approach is advantageous when access is required to tight or unusual geometries (such as offshore platform legs, jetty pylons, and flare bridge structures) and is an effective method of engineering out ongoing costs or risks when accessing the work front.



### APS ACCESS PLATFORM SYSTEM

APS Proprietary Access platform system is a modular and engineered access system that provides heavy loading capabilities and flexibility in installation through a multi-faceted configuration. It has been used across various sectors, providing customers with cost, time, and safety benefits.



### ENGINEERED DECKING

Our engineered decking system is a lightweight, versatile work platform for pipe racks and under-deck locations such as bridges, jetties and helidecks. This dynamic system has been proven globally and is quick to install and remove with minimal wind loadings or contact points, offering up to a 60% time saving compared to scaffolding systems.



### TENSION NETTING

For projects not requiring heavy lifting, heavy traffic or encapsulation, these rated ultra-lightweight systems can be erected and dismantled at an unprecedented speed in areas where access would otherwise be limited to extensive scaffolding or decking systems. They are minimally affected by wind or water loading and cost a fraction of other access systems available.



### FALL ARREST NETTING

ISO-compliant fall arrest netting is a lightweight, dynamic solution that safeguards plants, processes, and people. It's often used as a secondary fall protection measure for work at heights or to handle multiple work fronts at different elevations. Vertech has installed Australia's most extensive offshore fall arrest netting and utilised it on vertical structures for various sectors.



### APS MODULAR SCAFFOLD SERVICES

APS has over 1000 tonnes of owned Layher Scaffold. Our in-house Scaffold Design and Engineering team has worked on complex projects nationwide. Our highly trained scaffold workforce comprises 60+ core scaffolders with over 100 additional personnel available to support tasks as required. We provide scaffold dry hire, stock and inventory control, scaffold sales, and buy-back options to optimise project costs.

## SPECIALIST MAINTENANCE

We offer specialist access systems and inspection services for maintenance, upgrades, repairs, and remediation. Our experienced teams provide total safety, cost-effectiveness, and efficiency benefits. Vertech delivers excellence on complex projects in the resources sector.

### THE IMPORTANCE OF SPECIALIST MAINTENANCE, UPGRADE AND REPAIR

Maintenance, upgrades, and repairs are critical processes in many industries across Western Australia. In the industrial sector, these practices are even more crucial, and committing to their upkeep is of utmost importance.

Vertech Group has extensive experience in providing specialist maintenance services across various companies. Consistent maintenance helps keep projects on time and equipment functioning at peak levels.

Vertech has a proud history and unparalleled track record in delivering excellence on some of the most complex implementation projects across the energy and resources sectors.

Our people have delivered major onshore and offshore Greenfield construction and Commissioning projects and executed some of the most challenging Brownfield projects in the sector while also having a unique experience in supporting and delivering on many early decommissioning projects across Australia and New Zealand.



### V-FLARE PACKAGE

Vertech's V-Flare Specialist Package offers end-to-end maintenance, remediation, and replacement services for onshore or offshore flare tips. Our expert team uses various techniques to create a customised solution for each client. As flare-tip projects are critical to production, we work efficiently during shutdown, turnaround, or outage periods.

Upgrading equipment may have a significant cost, but it can lead to more efficient project work, making it a cost-effective solution in the long term.

Maintaining equipment and facilities prevents deterioration, which can cause equipment failure or unsafe working conditions for employees.

### OUR SPECIALIST MAINTENANCE, UPGRADE AND REPAIR SERVICES INCLUDE:

- ✔ Brownfield Project delivery
- ✔ Mechanical & Pipe Fitting
- ✔ Electrical & Hazardous Areas Inspection
- ✔ Specialist Rigging & Lifting
- ✔ Composite Wrap Application
- ✔ Coating Remediation & Application
- ✔ High Mobility Welding
- ✔ Specialist Access & Rope Access



### V-COMM PACKAGE

Vertech's V-COMM Decommissioning Package was formed to support the entire decommissioning cycle. Providing a collection of specialist services, systems, processes, and products, Vertech's experts will work alongside each client to achieve environmental and safety excellence, reduce cost through efficiency, and exceed all regulatory requirements.

## MARINE CLASS SERVICES

Vertech's Marine Department offers proactive, solutions-based services for marine structures. Our team comprises experienced professionals who specialise in inspections for ships, offshore floating structures, and subsea inspections. We provide unmanned and manned access, inspection, and preservation solutions, prioritising safety and cost-efficiency. We strive to innovate and collaborate with experts and clients to be industry-leading.

### MARINE CLASS INTEGRITY SERVICES

Vertech values innovation and provides engineering and repair services for marine class inspections and integrity management of various marine assets. We have accreditations from all significant societies for surveys and inspections. Our services include repair plans, survey planning, operational audits, vessel stability modelling, mapping surveys, fatigue management, anomaly tracking, and work pack generation.

### MANNED MARINE SERVICES

We provide complex campaign and compliance inspections on FPSOs in Australia, New Zealand, Asia Pacific, and West Africa. Also, we have completed integrity and class inspections on various vessels like merchant shipping, barges, tugs, and defence vessels. Our manned services include rope access inspection, NDT, 3D laser mapping, and other services.

### UNMANNED MARINE SERVICES

Vertech Group invests in advanced robotics to reduce and eliminate manned inspections. Geo Oceans, its subsidiary, is a pioneering force in the subsea inspection and marine sectors. Their most notable contribution is the ADV-ROV, a powerful and lightweight system designed for challenging inspections. We offer subsea corrosion mapping, mechanical NDT, mini ROV inspection and testing, UAV inspections, robotic crawlers and cameras, cathodic protection inspection, and HP cleaning and maintenance.



## TANK TESTING SERVICES

Vertech provides specialised storage tank inspection services to help companies maintain their bulk storage tanks while ensuring compliance with regulations and standards. Our experienced inspectors and engineers evaluate inspection data, design weld repairs, and prepare weld procedures to ensure maximum availability. We understand that each above-ground storage tank has unique factors to consider, and our years of experience have given us the expertise to provide the best solutions to our clients.

### TANK TESTING BY VERTECH GROUP

We design repair procedures for storage tanks, considering age, construction material, and stored product variables. Our repair documents and practices meet the requirements of storage tanks with plate numbers API-650 and API-653 and are customised based on your industry's operational needs.

Our tank testing services include detailed inspections, API-653 inspections, mini and micro ROV inspections, MFL floor plate inspections, NDTs, 3D laser scanning surveys, robotic crawlers, NACE coating condition inspections, and an integrated interface with onsite client representatives.

### WELDING & MATERIALS ENGINEERING

At Vertech, a weld should be as strong as the materials it joins. Welding procedures must be precise to ensure joint quality. Our experts offer tailored solutions to welding challenges, including welding new materials to older materials. We provide various services, including detailed inspection analysis, bespoke repair procedures, procedure qualification, welder qualification, and high mobility site welding services.



# RDVI SERVICES

Remote Digital Visual Inspection or RDVI is the application of remote digital systems such as cameras, robots or crawlers to inspect internally and assess challenging access areas without the need for intrusive inspections and the associated Confined Space Entry. RDVI methodologies work for condition assessment, process efficiency assessments and Foreign Object Search And Retrieval (FOSAR).

## FRONT END ENGINEERING DESIGN (FEED)

Our RDVI team collaborate with our clients during the FEED and planning phase of a project to define critical assets areas where RDVI can be applied, what will be required to access these areas and the likely degradation mechanism.

RDVI integration in the Pre-FEED and FEED stages of the project maximises RDVI capabilities and results in the most significant savings, exceptional inspection coverage, a reduction in turnaround time frames and fewer resource requirements. This process also dramatically reduces the possibility of substantial changes being required during the execution phase.

## RDVI SPECIALISED SITE EXECUTION

Vertech's Campaign Execution Team provides complete end-to-end assistance with campaigns, projects and turnarounds. Our RDVI technicians have a wide variety of inspection experience. They are trained explicitly across the full suite of RDVI technologies, allowing them to assess each situation and apply the correct tooling on a case-by-case basis.

What sets Vertech's RDVI Team apart is that our experts understand the needs of various stakeholder groups, from onsite personnel to upper management. Our team works with each group every step of the way to help them understand and interpret the relevant data, results, and information.

## OPERATIONAL PLANNING & REVIEW

Vertech's Facility Review & Planning service provides clients with focused campaign planning for the internal inspection requirements of pressure equipment. Our processes ensure that the correct inspection equipment, support tooling and techniques are applied in a timely and efficient manner.

We have taken full advantage of our team's extensive campaign and project experience to create a specialised array of procedures and methods to help reduce execution windows, bringing assets back online faster.



# PROJECT MANAGEMENT

At Vertech, we excel at project and program management through early stakeholder engagement, comprehensive planning, strong monitors and controls and effective communication. Our experienced operations team work closely with clients to define a project charter and meet all specific demands and deliverables. Our in-house integrated management tools support project delivery through every stage of the project lifecycle.

The key takeaways and lessons learned from our experience are that early engagement in project planning is crucial, setting clear expectations and goals from the outset is essential and robust change management, and communication plans ensure alignment and excellence in delivery.

Each project presents its unique challenges, requiring tailored strategies and solutions. The role of frontline leadership, particularly that of the project manager, cannot be overstated. Effective communication and strong leadership are key differentiators between a good and significant project. These elements, when combined, form a robust framework for managing inspections and ensuring project success.



### Initiating

This stage marks the beginning of a project, specifically when the project gets approved, and helps managers visualise what is to be done.

### Planning

Planning is the most crucial stage of this process and identifies what needs to be done, and how it should be done, in order to accomplish the project scope.

### Executing

The execution stage sees the previously designed plans enacted. This is typically the brunt of any project and is the key area where results will be delivered.

### Monitoring

This stage maintains the integrity of the project and increases its longevity through close monitoring and control of various areas - ensuring that all deliverables are being met.

### Closing

This marks the end of the project lifecycle and is where project reports will be presented to clients.





**WATER BALLAST AND CARGO OIL TANK INSPECTIONS**

Utilising advanced ROV inspection technologies, GVI, CVI, UTM and other NDT methods, we conduct tank inspections to meet the specific Class requirements of each asset.

Our tank inspections are performed without emptying the tank of fluid, thereby reducing facility downtime while avoiding costly and dangerous Confined Space Entry (CSE) procedures.

**HULL & MOORING UWILD / IN-WATER SURVEYS**

We deploy our ROVs directly from the facility, eliminating the need for costly carbon-emitting support vessels.

Periodic or special surveys are tailored to the individual assets, considering the client's age and condition, class requirements and engineering needs.

Cleaning General and Close Visual Inspections are performed and supported with cleaning, CP, UTMs, penetration isolations, sea chest blanking, angle measurements, chain gauging and other NDT inspections as required.

Remote live data feeds can be supplied to support remote inspection and class attendance.

**JACKETS, RISERS, SUBSEA FIELD INSPECTION**

We have extensive experience performing ROV inspections of jackets, caissons, risers, mooring systems and subsea infrastructure, including pipelines, spools, wellheads and anode skids. We can deploy directly from platforms or vessels of opportunity.

Inspections and ROV interventions include anything from GVI/CVI, freespan, CP, UTM, FMD, marine growth assessment and spot cleaning to bulk cleaning, dredging, advanced NDT inspections (e.g. corrosion mapping, crack detection) and subsea repairs.



**SUBSEA ADVANCED NDT INSPECTION**

Working in collaboration with Sonomatic, Geo Oceans has extensive experience in the development and ROV deployment of miniaturised subsea advanced NDT inspection tools to create high-accuracy corrosion maps of sections of pipelines, spools, hulls, infrastructure or to survey critical welds.

**METROLOGY AND PHOTOGRAMMETRY**

Our Mini-ROV inspection systems include imaging technologies for accurate size and area measurements. A camera array (stereo or mono) acquires high-definition video and images that can be processed for scaled measurements and 3D modelling.

The 3D models can calculate size and area measurements for localised corrosion mapping purposes or quantitative assessment of the remaining anode percentages. These 3D models can also be compared against the 'as built' (baseline) model of the anodes to create a 'deviation' model that displays the level of material loss.

**MARINE HABITAT SURVEYS USING GO VISIONS™**

Geo Oceans has an award-winning benthic habitat mapping and monitoring capability utilising the GO Visions™ software to support regulatory environmental approvals for new construction projects (wharves, jetties, pipelines, offshore wind farms) or for decommissioning projects (pipelines, subsea cables, wells, jackets, nearshore infrastructure).



**SUBSEA INSPECTION**

Sonomatic Subsea is a leading provider of advanced subsea inspection technologies, including ROV and diver-deployed robotic systems. With 30+ years of experience, we design, develop, and build our inspection systems and scanners to meet specific client requirements.

Our unique and innovative inspection solutions enable clients to manage the integrity of aging assets while making informed and cost-effective decisions crucial to plant safety and longevity. We have a proven track record of safely delivering subsea inspection services for over three decades.

**PIPELINE INSPECTION**

Sonomatic specialises in pipeline inspections to deliver high-quality data. We offer topside and subsea services to ensure pipeline integrity. We provide innovative statistical analysis methods to help operators make informed decisions regarding pipeline inspection and integrity assessments.

Sonomatic’s advanced subsea pipeline inspection services utilise cutting-edge technology to effectively detect potential issues, collect precise data, and assess pipeline conditions to ensure the integrity and reliability of underwater energy infrastructure. This reduces downtime, maintenance costs, and enhances safety and environmental protection.

**BESPOKE INSPECTION SOLUTIONS**

Sonomatic is a relationship-driven company that constantly provides its clients with the best possible service using the most specialised technology. We always offer a bespoke solution to individual projects by selecting the most appropriate products and techniques from our wide range of equipment and software.

This can range from the total planning-to-reporting package offered by our Integrity Support Services division to one-off inspection reports by specialist engineers using the most sophisticated and advanced flaw detection methodologies.



**NON-INTRUSIVE INSPECTION**

Sonomatic is a pioneer in Non-Intrusive Inspection (NII) with global implementation. Our experienced team combines advanced data science and cutting-edge engineering capabilities to offer complete NII campaign services worldwide. We are committed to providing quality solutions that meet the highest safety and efficiency standards while ensuring an auditable trail for each department. NII is becoming an alternative approach to traditional Internal Visual Inspection (IVI) for pressure vessels, with some organizations aiming to eliminate vessel entry by 2026.

**TANK CLEANING & INSPECTION**

Storage tanks typically contain large volumes of valuable but potentially hazardous fluids. As such, inspection is a critical element of the integrity management of storage tanks. The objective of the inspection is to provide information on the tank’s condition. This information should be used to support effective integrity management decisions. Historically, storage tank inspection has relied on entry with the tank out of service. Opening storage tanks for internal inspection is a lengthy and challenging process.

The tank will be unavailable during the internal inspection and must be drained and cleaned before entry is possible. There are also safety hazards associated with personnel entry for inspection. Remote Internal Inspection (RII) methods offer an attractive alternative as they can be conducted whilst the tank is in-service and do not require vessel entry. Sonomatic’s technicians are experienced in using various inspection techniques on numerous assets in many environments.

**INTEGRITY ENGINEERING**

Sonomatic’s Integrity Services Department provides engineering and operational support to clients, combining experience in the field with specialised engineering, planning, execution, data analytics, statistical methods, and custom software development. We specialise in advanced, non-intrusive inspections and provide objective analysis through effective planning. Sonomatic’s practical statistical methods for inspection planning through simulation position us to support the integrity management sector’s transition to increased data-driven decision-making.





**AERIAL SURVEY & MAPPING**

AUAV offers top-tier aerial surveying and mapping services using state-of-the-art drones and skilled surveyors. We aim to provide the highest quality results with centimetre-level accuracy, enabling our clients to make agile decisions. Our maps and survey data have a 1-3cm resolution per pixel, and our 3D terrain models are accurate to approximately 50mm horizontally and 50-80mm vertically.

**3D DIGITAL TWINS (InSite)**

AUAV's InSite software is a cloud-based drone data presentation and asset inspection platform. Its features include 3D site capture, integration with other systems, customisable options, and versatile data display capabilities. The software is geared towards clear data capture, essential for in-depth analysis and informed decision-making in drone operations and data processing services.

**DETAILED CLOSE VISUAL INSPECTION**

Drones are crucial for detailed, safe, and efficient visual inspections in infrastructure maintenance, construction, and energy. With high-resolution cameras and advanced stabilisation technologies, drones can inspect structures like bridges, wind turbines, and high-rise buildings, reducing the need for human inspectors in dangerous or hard-to-reach areas. The agility of drones captures a wide range of angles and perspectives, providing comprehensive visual data that speeds up the inspection process, increases accuracy, and improves maintenance decisions. Using drones exemplifies the integration of technology in modernising and optimising industrial and maintenance practices, making them safer, more efficient, and cost-effective.



**LIDAR**

Drone-based LiDAR is an aerial surveying technique for generating point cloud data for topographical surveys. AUAV has extensive experience in collecting, processing and delivering LiDAR data for mining, engineering power sector and environmental clients. With hundreds of points per square meter, the data is beneficial for surveying areas with vegetation, analysing power line infrastructure and landslip analysis.

**THERMAL**

Aerial thermography provides an efficient method for capturing temperature anomaly data over large areas. Typical uses include the identification of underground fires, solar farm defects, gas leaks and potential water ingress behind concrete structures. The most widespread use of drone-based thermal capture is on grid-scale solar assets, where data on up to 700,000 panels can be captured in a week.

**AERIAL PHOTOGRAMMETRY**

Photogrammetry is the term used for creating very accurate 3D data from photographs. This is a speciality of AUAV, where our team routinely captures and processes models with 100,000 high-resolution images to create digital twins of assets. These digital twins have resolutions between 1cm and 1mm, enabling the engineering inspection of assets, tendering for remediation or demolition, facilitating design works or various virtual reality applications. AUAV have developed a bespoke online platform, inSite,



**SITE INVESTIGATION**

We deliver comprehensive site investigation and appraisal services, including detailed surveys and advanced monitoring systems. We specialize in habitat mapping and use autonomous underwater vehicles (AUVs) equipped with the latest sensors and imaging technology to conduct thorough surveys, even in inaccessible marine environments. Our commitment to providing accurate, actionable data for marine projects sets us apart.

**SUBSEA POSITIONING**

We utilise advanced Ultra Short Baseline (USBL) systems to accurately control and manage AUV surveys. These systems determine the position of dynamic subsea targets by transmitting and receiving acoustic signals between a submerged transceiver and a target beacon. Our services extend beyond supporting our AUV activities and provide precise navigational and positional support for various other applications, including ROV inspection, sediment and water sampling, drop-camera surveys, towed instrumentation surveys, and search and recovery exercises.

**METOCEAN SURVEYS**

Blue Ocean Marine Services offers a comprehensive metocean service for offshore projects. Our specialised monitoring services cater to shallow and deep marine environments, evaluating directional waves, currents, water quality, and more. We provide water level monitoring, advanced weather forecasting, sediment sampling, and real-time monitoring systems, ensuring up-to-date data for immediate decision-making. Our services also include visual surveys and hydrographic surveys to map underwater topography. All our services are tailored to deliver detailed and reliable metocean data for our clients' offshore projects.



**REGULATORY COMPLIANCE**

Increased marine activity and environmental accountability have increased the demand for ocean monitoring programs. Ocean robotic platforms have proven highly effective in enhancing ocean survey techniques. Blue Ocean Marine Services has executed numerous data acquisition campaigns to ensure offshore compliance. Our services include PFW discharge monitoring, dredging and spoil disposal monitoring, PAM, UXO surveys, water and sediment testing, scour monitoring, real-time monitoring, and data harvesting.

**SUBSEA INSPECTION**

Blue Ocean Marine Service offers cost-effective and efficient subsea inspection surveys using Autonomous Underwater Vehicles (AUV) and Remotely Operated Vehicles (ROV). These portable technologies require only a small specialist team and can be mobilised quickly. Our successful pipeline inspections demonstrate that these vehicles can deliver exceptional survey results while reducing project costs, schedules, logistical efforts, and risks. Our subsea inspection services include pipeline inspection, infrastructure position surveys, cable route surveys, leak detection surveys, general visual inspections (GVI), and scour monitoring.

**EMERGENCY RESPONSE**

Blue Ocean Marine Services provides efficient emergency response services for environmental and infrastructural crises. Our expert technicians are trained for rapid deployment, while our AUV fleet enables quick mobilisation. Our services include oil spill response, infrastructure surveys, and pollution monitoring. We also provide scour monitoring and water and sediment testing for thorough environmental assessment. Our emergency response offers comprehensive solutions for safeguarding the environment and marine infrastructure.

# KEY CONTACTS

## VERTECH

**Adam Haling**  
Commercial Manager  
T: +61 (8) 6168 7600 | M: +61 475 509 140  
E: Adam.Haling@vertechgroup.com.au

**Craig Davies**  
Group Development Manager  
T: +61 (8) 6168 7600 | M: +61 429 222 409  
E: Adam.Haling@vertechgroup.com.au

**Bruce McKenzie**  
Department Manager - Integrity & Inspection  
T: +61 (8) 6168 7600 | M: +61 487 473 713  
E: Bruce.Mckenzie@vertechgroup.com.au

**Donovan Rheeders**  
Department Manager - Projects & Shutdowns  
T: +61 (8) 6168 7600 | M: +61 439 110 880  
E: Donovan.Rheeders@vertechgroup.com.au

**Rob Porter**  
Department Manager - Frontline & Ad Hoc  
T: +61 (8) 6168 7600 | M: +61 497 327 024  
E: Rob.Porter@vertechgroup.com.au

**Company Contact Information**  
T: +61 (8) 6168 7600  
E: Info@vertechgroup.com.au

## GEO OCEANS

**Nick Veitch**  
Managing Director  
T: +61 (8) 6168 7611 | M: +61 400 352 134  
E: Nick.Veitch@geoceans.com.au

**Ian Collins**  
Subsea Inspection Manager  
T: +61 (8) 6168 7611 | M: +61 448 669  
E: Ian.Collins@geoceans.com.au

**Ray Gard**  
Operations Coordinator  
T: +61 (8) 6168 7611 | M: +61 491 953 000  
E: Ray.Gard@geoceans.com.au

**Pete Tawse**  
Operations Manager - International  
T: +61 (8) 6168 7611 | M: +1 346 550 4092  
E: Pete.Tawse@geoceans.com.au

**John Hebert**  
Operations Manager USA  
T: +61 (8) 6168 7611 | M: +1 281 312 9431  
E: John.Hebert@geoceans.com.au

**Andy Younger**  
Project Manager - UK/Africa/Middle East  
T: +61 (8) 6168 7611 | M: +44 7780 119 614  
E: Andy.Younger@geoceans.com.au

## SONOMATIC

**Alex Cesan**  
General Manager - Australia & NZ  
T: +61 498 442 666  
E: Alex.Cesan@sonomatic.com.au

**Zach McCann**  
Region Manager - South East Asia  
T: +60 12 555 1569 | M: +61 404 797 670  
E: Zach.Mccann@sonomatic.com.my

**Graham Marshall**  
Subsea Project Manager - Europe & Africa  
T: +44 (0) 1224 823 960  
E: Graham.Marshall@sonomatic.com

**Esteban Cesan**  
General Manager - Americas  
T: +1 832 977 0303  
E: Esteban.Cesan@sonomatic.com

**Gordon Reid**  
Region Manager - Middle East  
T: +9712 6580708  
E: Gordon.Reed@sonomatic.com

**Charles Loader**  
General Manager - Europe & Africa  
T: +44 (0) 1925 414000 | M: +44 (0) 7376 714765  
E: Charles.Loader@sonomatic.com

## AUAV

**James Rennie**  
Managing Director  
T: 1300 738 521 | M: +61 497 070 576  
E: James.Rennie@auav.com.au

**Vaman Purohit**  
Business Development - Sales  
T: 1300 738 521 | M: +61 405 878 120  
E: Vaman.Purohit@auav.com.au

## BLUE OCEAN MARINE SERVICES

**Keith Wallace**  
General Manager  
T: +61 (8) 6263 8785 | M: +61 409 557 002  
E: Keith.Wallace@blue-ocean.com.au

**Company Contact Information**  
T: +61 8 6263 8785  
E: Info@blue-ocean.com.au