



Vertech Case Study

Cargo Tank Pipe Inspection and Repair

1 Introduction

Vertech were engaged to carry out an as found assessment inspection and provide ongoing NDT, repair support of damaged adjoining cargo tank pipe work.

Vertech were contacted days away from Christmas Eve to supply a multi-disciplined team. We assembled and successfully mobilised a number of highly specialised teams before the New Year to carry out an as found assessment and NDT inspection of damaged pipe work.

Main Challenges

This scope had multiple challenges due to the confined space environment and technical scope requirements. Our teams had to deal with high temperatures, very limited space with multiple work groups and activities. Our team's tenacity, professionalism and ability to think outside the box were integral to the success of this scope.



2 Innovation

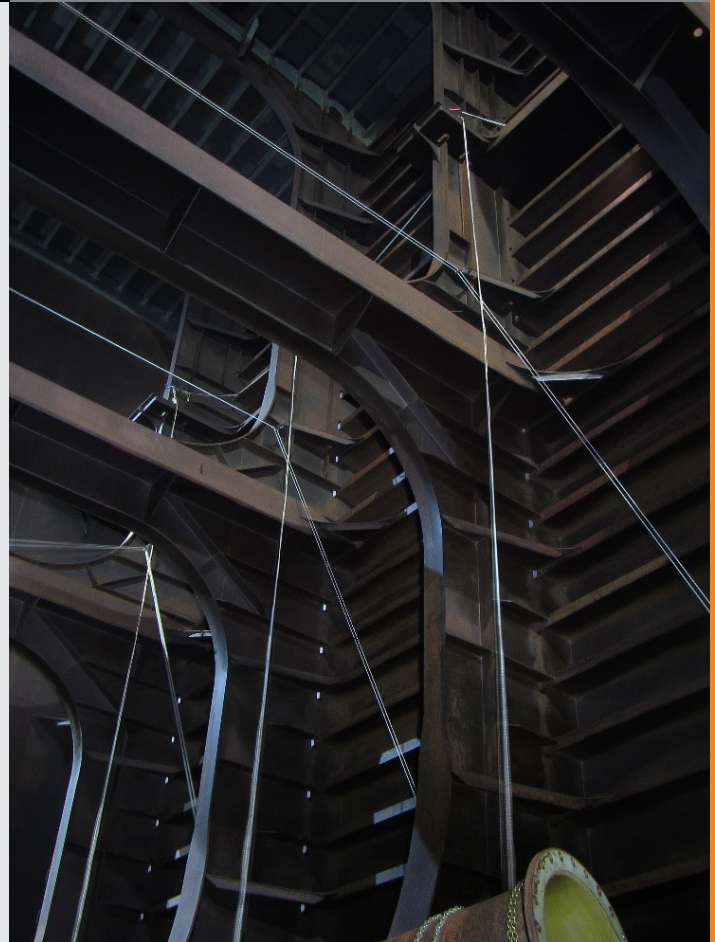
Cargo tank spaces have limited rigging points due to their design. Vertech's rope access capability were integral in the success of this scope by providing rigging support for shifting damaged and repaired pipe work as required using the internal bulk head and transverse web structure as primary rigging points for the successful execution of all rigging activities. Vertech were involved in the development and execution of comprehensive lift plans to ensure each lift was carried out safely and efficiently.

3 Project Summary

14 600 man hours were recorded in the inspection and repair scope without a recordable incident which is a huge achievement.

Vertech followed up by providing a 10-man multi-discipline team to support the ongoing engineering and repair execution.

Vertech's multi-discipline specialist team were integral in the success of this scope with the supply of access solutions, specialist technical rigging, welding inspection, 3D modelling, ongoing NDT testing and general ad-hoc repair support.



4 Vertech Contact Details

19 Walters Drive, Osborne Park
Western Australia 6017
Phone: +61 (8) 6168 7600
Email: info@verttech.com.au